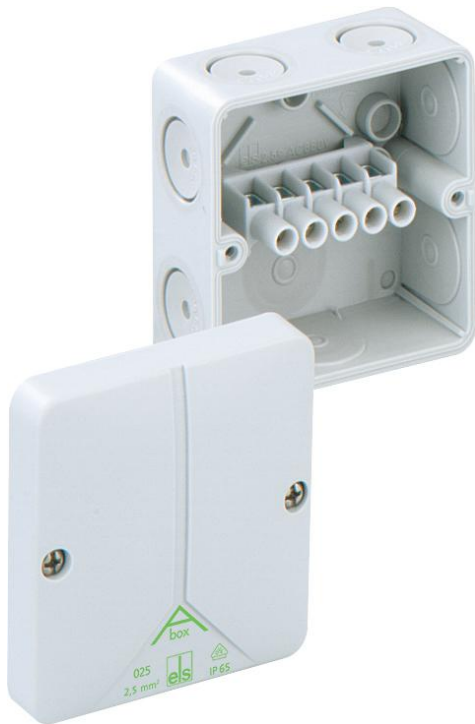


Junction Box

Abox 025-2,5²



Abox 025-2,5²

Junction Box

CUSTOMIZABLE

Productnumber: 80240701
Dimensions: 80 x 80 x 52 mm

Junction box acc. to DIN EN 60670 (VDE 0606),
Ui=690V, with self-sealing, soft inlet membranes,
M20, seal range 2 - 16 mm

**Grey, with screw terminal, 5-pole - 2.5 mm²
(4 x 1.5² / 4 x 2.5²)**



To industrial product:
<https://www.spelsberg.com/p/49040201>

Technical Data

electrical characteristics

Protection type UL:	not specified
Rated operating voltage AC:	690 V
Rated insulation voltage AC:	690 V
Type of protection:	IP65
Circuit integrity class:	none
Max. conductor cross section:	2,5 mm ²
Protection class:	II

Colours

Base unit colour:	grey
Cover colour:	grey

Dimensions

Width:	80 mm
Length:	80 mm
Height:	52 mm

Material characteristics

suitable for exterior use:	no
Burning behaviour in accordance with UL 94:	HB
Burning behaviour in accordance with VDE:	650 °C
Halogen free:	yes
Industry quality:	no

mechanical properties

for sealing range max:	16 mm
Type of fastening:	Wall/ceiling mounting
Sealable:	yes
Cover screw torque:	1 Nm
for sealing range min:	2 mm
Impact strength:	IK07

Ambient conditions

max. relative humidity 25°C:	95 %
max. relative humidity 40°C:	50 %
Min. ambient temperature:	-25 °C
Max. ambient temperature:	40 °C
24h ambient temperature:	35 °C

Material

Base unit material:	Polystyrene
Cover material:	Polystyrene
Cover screw material:	Stainless steel V2A

Certificates

Test mark:	VDE (DIN EN 60670-1/-22 (VDE 0606-1/-22))
------------	---

Accessories

KS M20 - Combi set

WST M20 - Twist plug

WNI M20 - Twist nipple

SNI M20 - Stepped nipple

KVR M20-MGM - Cable gland

KVR M20-GDB/MGM - Cable gland

AST M20 - Attachment bushes

VST M20 - Sealing plugs

DMS M20/w - Double-membrane seals

DMS M20 - Double-membrane seals

BST M20/sw - Ventilation seal

BST M20 - Ventilation seal

RST M20 - Conduit connector

Abox 025/040 KLS-2,5²/4² - Terminal block

Abox PST - Sealing kit
