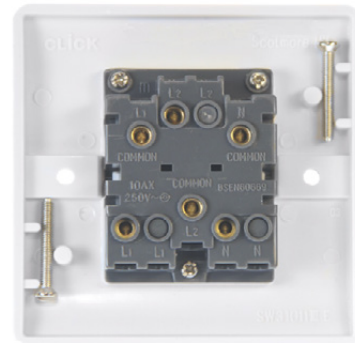


**Product Code:** CMA020

**Description:** 10A 3 Pole Fan Isolation Plate Switch



### General Information

<b>Plate Dimensions (mm)</b>	86 (W) x 86 (H) x 9.5 (D)	
<b>Plate Fixing Centres - Horizontal (mm)</b>	60.3	
<b>Style</b>	Rounded Profile	
<b>Finish</b>	Polar White	
<b>Materials</b>	Front Plate & Rocker Switch: Urea Terminals: Brass Contacts: Silver "on-lay" Copper / Brass	Rear Housing: Nylon Terminal Screws: Steel & Yellow Passivated Internal Busbars: Formed Pressed Brass
<b>Anti Microbial Certified</b>	Yes	
<b>Rated Voltage (V~) (Ue)</b>	250	<b>Frequency (Hz)</b> 50
<b>Resistive Load Rating (A)</b>	10	
<b>Termination Type</b>	Screw	
<b>Terminal Size (mm)</b>	Ø3.5	<b>Terminal Torque Value (Nm)</b> 0.5
<b>Terminal Capacity - Solid (mm<sup>2</sup>)</b>	4 x 1.5 or 2 x 2.5	
<b>Modular Rocker Switches</b>	No	
<b>Triple Pole Switch</b>	Yes	
<b>Product Marking</b>	Isolator, On, Off	
<b>Minimum Back Box Depth (mm)</b>	16	
<b>Ingress Protection</b>	IP20	
<b>Operational Temperature (°C)</b>	-5 to +40	
<b>Warranty (Years)</b>	20	
<b>Standards</b>	BS EN 60669-2-4 BS EN 60669-1	

### Additional Information

Ensure that the mains supply is isolated before commencing installation and refer to the circuit diagram with the relevant product.  
Bare earth cables must always be covered with appropriate sleeving and wired to the earth terminal.  
All white moulded accessories are manufactured using Urea Formaldehyde, which has similar inherent properties to antimicrobial additives that inhibit the growth of infectious diseases as well as anti-viral properties against enveloped and non-enveloped viruses.  
All products have been independently tested with 99.9% of enveloped viruses and 92% of non-enveloped viruses killed off whilst achieving a 99.9% kill rate across all four types of the strains of bacteria - MRSA, E-Coli, Salmonella, and Klebsiella Pneumoniae.